

AXE Technical Parameter

Type	AXE-G7
Laser source	7 red laser crosses +1 extra laser line
Deep hole scanning	Support
Measurement rate	800,000 measurements/s
Laser class	CLASS II (eye-safe)
Resolution	0.100 mm
Accuracy (300mm ball bar)	Up to 0.020 mm
Volumetric accuracy (without extra device)	0.02 mm+0.035 mm/m
Scanning area	420 mm×380 mm
Output formats	.stl, .ply, .xyz, .dae, .fbx, .ma, .obj, .asc or customizable
Work temperature	-10°C~40°C
Interface mode	Gigabit Lan

All-Round 3D Digital Solution

Scantech 3D measurement system offer professional measurement technology for variety industries.

Rapid Prototyping



Reverse Engineering



3D Inspection



3D Visualization



Company Introduction

Hangzhou ScanTech Co., Ltd is a high-tech enterprise specialized in developing, manufacturing and selling of intelligent visual inspection equipment. As one of the most professional 3D digital equipment suppliers, ScanTech has been granted and assigned numbers of technological patents.

RR&D team developed series of 3D digital equipment with self-owned intellectual properties such as composite 3D scanner, handheld 3D laser scanner, global 3D scanner, color 3D scanner, tracking 3D scanner and global photogrammetry system.

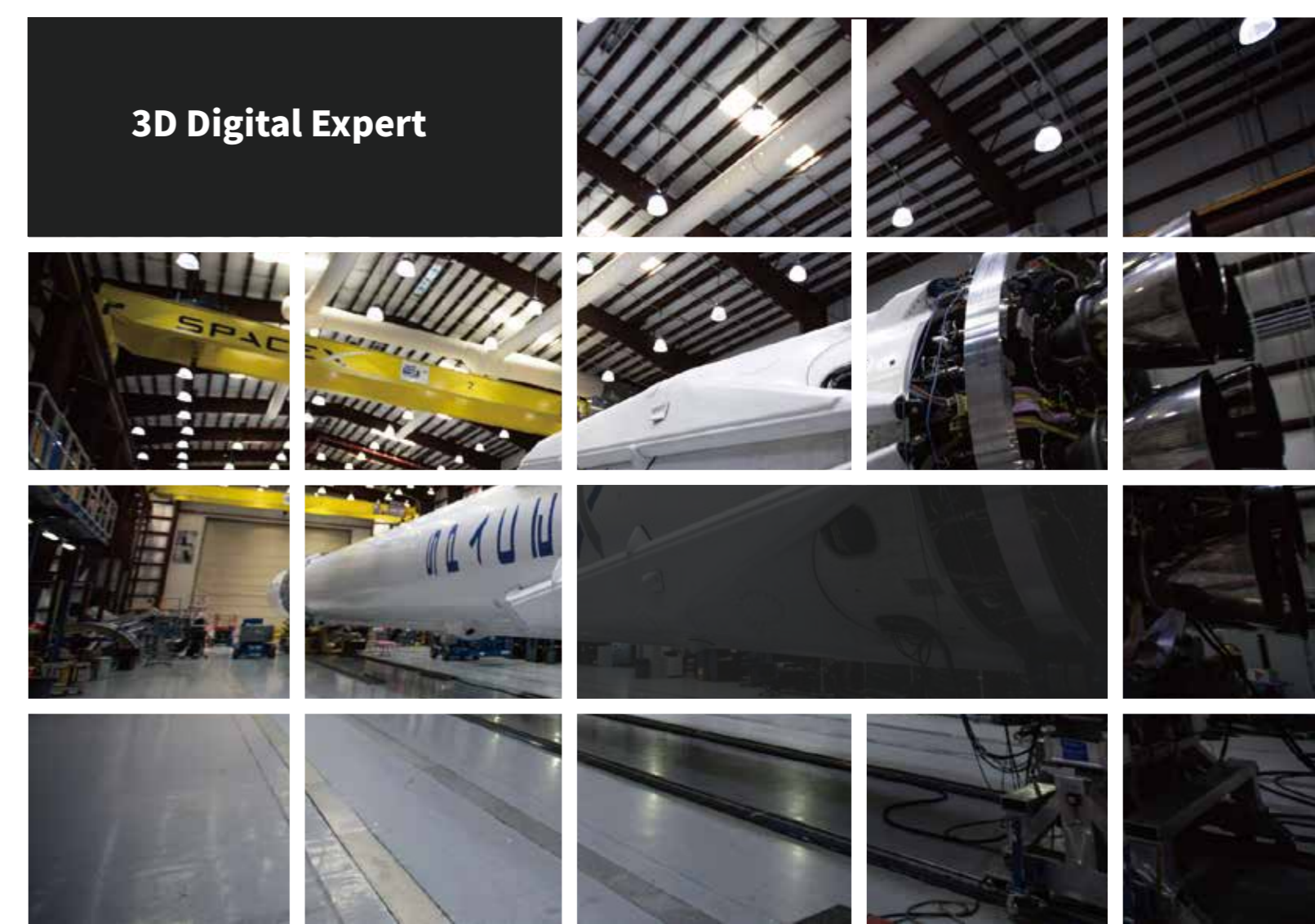
Furthermore, our R&D team has established a joint development center with Norway Metronor which is a well-known optical metrology enterprise in Europe.

Hangzhou Scantech Co., Ltd.
 Building 12, No.998, Wenyi West Road, Yuhang District, Hangzhou,
 Zhejiang Province, China
 Tel:0086-571-85852597 Fax:0086-571-85370381
 E-mail : info@sikantech.com
 Website : www.3d-scantech.com

SCANTECH
3D Digitization Expert

Authorized Distributor

3D Digital Expert



AXE 3D SCANNER

Find The Most Efficient 3D Measurement Solution



HangZhou Scantech Co., Ltd.



AXE

AXE combines the whole characteristics and functions of normal handheld 3D scanner. The biggest breakthrough is overturn the measurement way for large volume. AXE operates high accuracy scanning for large volume without extra device.

High Precision

- No need to work with global photogrammetry system
- Volumetric accuracy is up to 0.02mm+0.035 mm/m
- Accuracy far exceed normal hand-held scanner

Fast Speed

- Cut half quantity of sticker
- Double scan area
- 480000measures/s

Flexibility & Portability

- Easy operation
- Handheld measurement
- Easy to perform 3D measurement individually for large volume

Large Measurement Range

- Double scan area
- Efficiently complete 3D reconstruction of large volume

Large Volume Measurement Solution Comparison

Latest Solution

AXE 3D scanner



Traditional Solution

handheld 3D scanner + global photogrammetry system



Greatly reduce labor cost and time

Double Scan View

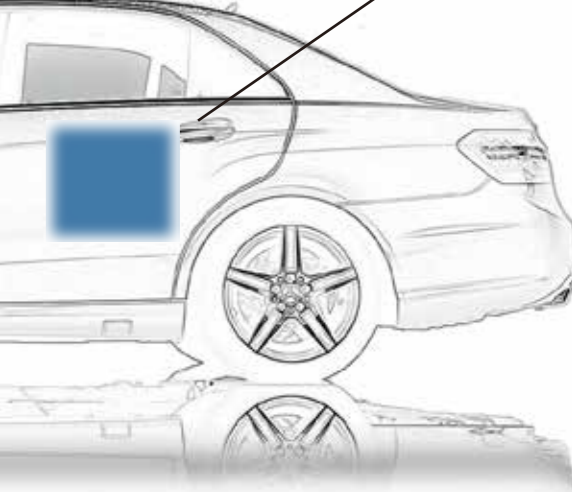
AXE 3D scanner

scan area
420mm×380mm



Normal handheld 3D scanner

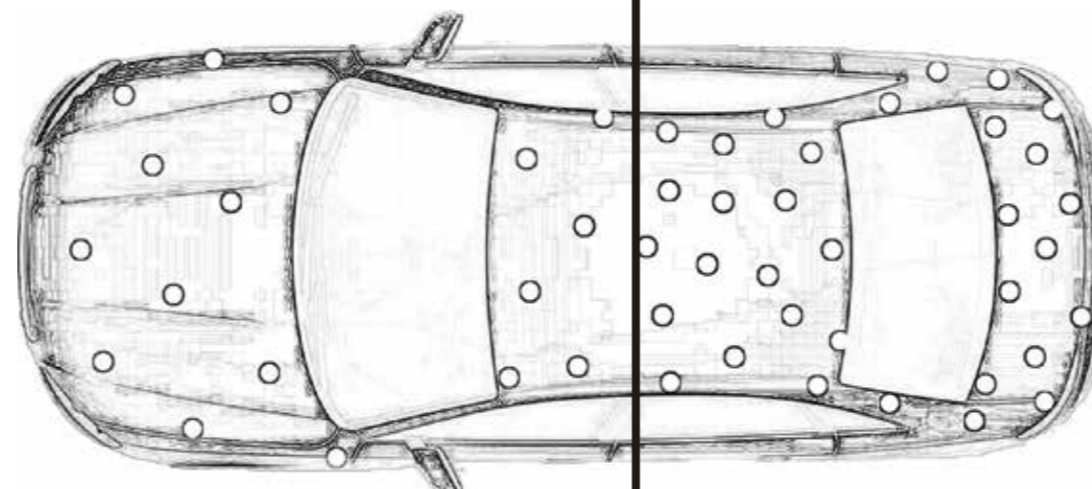
scan area
275mm×250mm



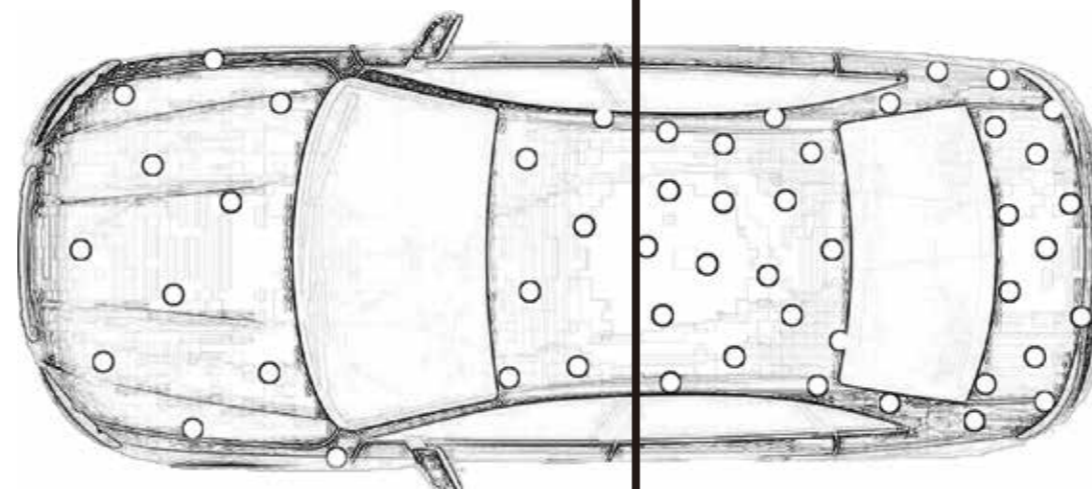
Greatly improve efficiency

Cut Half Quantity Of Stickers

AXE 3D scanner



Normal handheld 3D scanner



Greatly reduce labor cost and time

Portability

AXE 3D scanner



AXE waterproof case

Normal handheld 3D scanner

global photogrammetry system



laptop

waterproof case

reference bar